

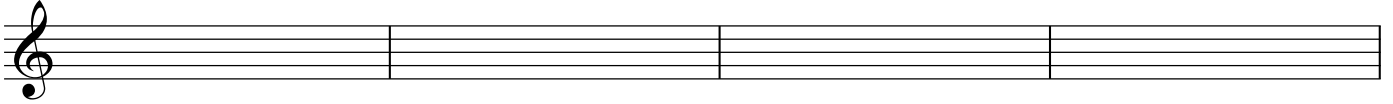


# Identify the Notes of the Major Scales

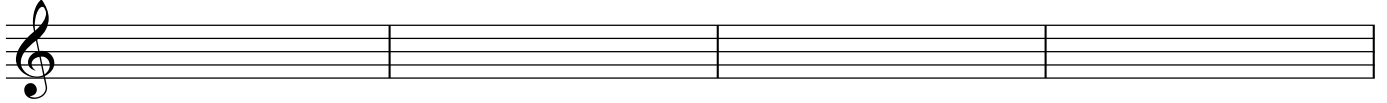
Name: \_\_\_\_\_

Date: \_\_\_\_\_

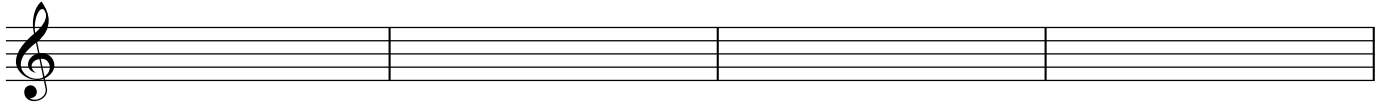
Using half notes, write in the C Major Scale notes starting with Middle C:



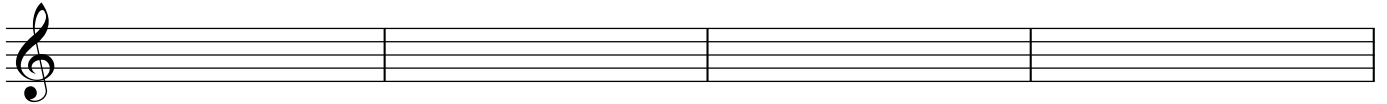
Using half notes, write in the F Major Scale notes (and key signature) starting with 1st space F:



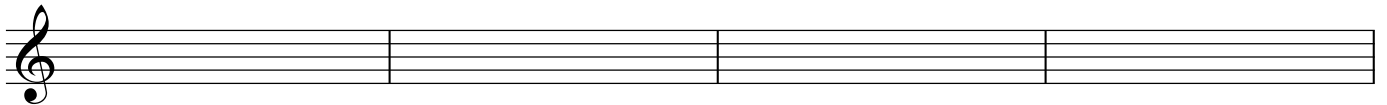
Using half notes, write in the G Major Scale notes (and key signature) starting with 2nd line G:



Using half notes, write in the B Flat Major Scale notes (and key signature) starting with the B Flat below Middle C:



Using one of the Major Scales listed above, compose a simple melody using half notes and quarter notes forming an eight measure phrase. Perform this melody on the keyboard. Notate the melody using Sibelius on your computer. Print out the melody and hand it in for evaluation by the teacher.



Teacher Evaluation - Student Demonstrates Understanding Of:

Major Scales and Key Signatures: \_\_\_\_\_

Phrases / Creating a Melody: \_\_\_\_\_

Rhythms / Beats Per Measure: \_\_\_\_\_

Using Sibelius to Notate and Print Melody: \_\_\_\_\_

Other: \_\_\_\_\_